



**Manufactured by Vapen Brands**

Licensed Entity:

Herbal Wellness Center Inc

4126 W Indian School Rd

Phoenix, AZ 85019

Registration License#: 00000086DCKR00375578

Establishment License# 00000032ESPT83532730

Batch:

Strain:

Method of Extraction:

Lab Report:

Date of Harvest:

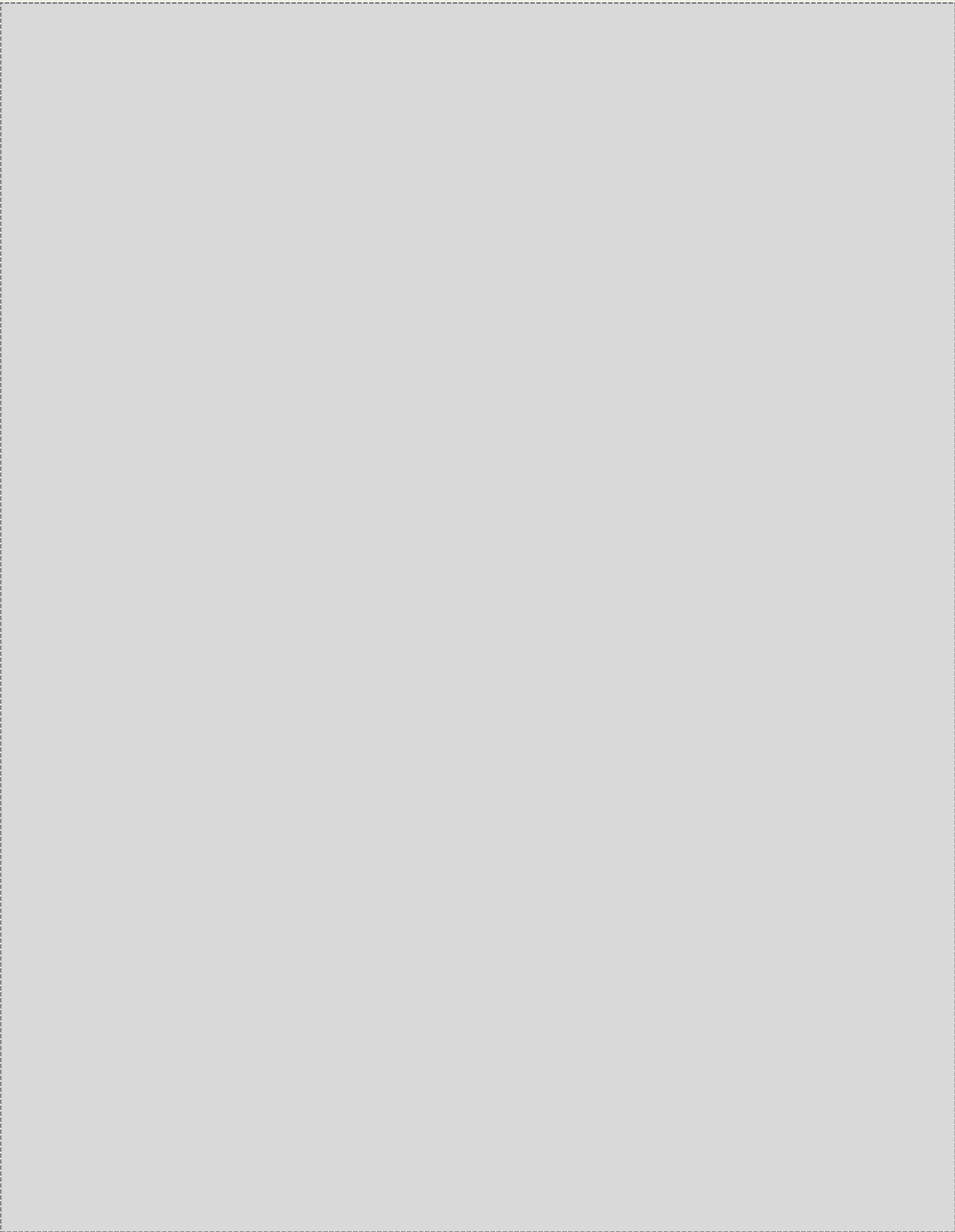
Date of Manufacture:

ARIZONA DEPARTMENT OF HEALTH SERVICES WARNING: Marijuana use can be addictive and can impair an individual's ability to drive a motor vehicle or operate heavy machinery. Marijuana smoke contains carcinogens and can lead to an increased risk for cancer, tachycardia, hypertension, heart attack, and lung infection. Marijuana use may affect the health of a pregnant woman and the unborn child. KEEP OUT OF REACH OF CHILDREN

WARNING: Using marijuana during pregnancy could cause birth defects or other issues to your unborn child.

Distribution Chain:

Distribution Chain Continued:



Vapen Brands  
4126 W Indian School Rd  
Phoenix, AZ 85019  
16027222293  
Lic#: 00000086DCKR00375578

Sample: S312055-01  
CC ID#: 2312C4L0050.3930  
Lot#: N/A  
Batch#: 231226-001  
Batch Size: N/A

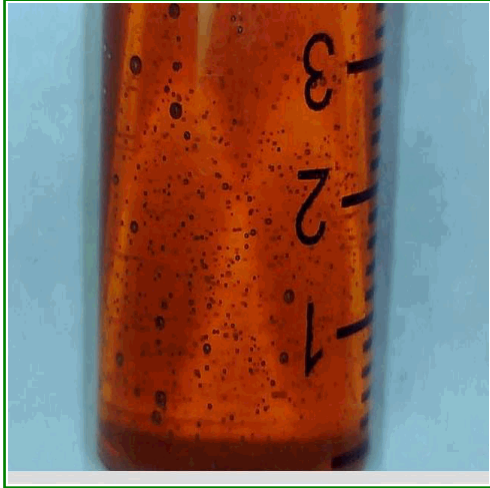
**FINAL**

Sample Name: MB Blueberry Kush Disposable

Strain Name: Blueberry Kush  
Matrix: Concentrates\_Extracts  
Amount Received: 17.6068 g

Sample Collected: 12/26/2023 10:00  
Sample Received: 12/27/2023 12:30  
Report Created: 01/03/2024 22:12

**SAFETY**



<b>Microbials</b>  <b>PASS</b>	<b>Residual Solvents</b>  <b>PASS</b>	<b>Mycotoxins</b>  <b>PASS</b>	<b>Pesticides</b>  <b>PASS</b>
<b>Metals</b>  <b>PASS</b>			

**Terpenes**

**Total Terpenes (Q3)**

**Cannabinoid Results**

<b>88.9%</b> <b>Sum of Cannabinoids (Q3)</b>	<b>86.3%</b> <b>Total THC</b>	<b>&lt;LOQ</b> <b>Total CBD</b>	<b>RATIO</b> <b>1 : 0</b> <b>THC : CBD</b>
---	----------------------------------	------------------------------------	--

Total THC= THCA \* 0.877 + d9-THC  
Total CBD= CBDA \* 0.877 + CBD



Jillian Blaney  
Technical Laboratory Director

**Vapen Brands**

4126 W Indian School Rd  
Phoenix, AZ 85019  
1602722293  
Lic#: 00000086DCKR00375578

Sample: S312055-01

CC ID#: 2312C4L0050.3930  
Lot#: N/A  
Batch#: 231226-001  
Batch Size: N/A

**FINAL**

**Sample Name:** MB Blueberry Kush Disposable

Strain Name: Blueberry Kush

Matrix: Concentrates\_Extracts

Amount Received: 17.6068 g

Sample Collected: 12/26/2023 10:00

Sample Received: 12/27/2023 12:30

Report Created: 01/03/2024 22:12

**Cannabinoids by HPLC-DAD - Compliance**

Date Analyzed: 12/29/2023 Analyst Initials: DRF SOP: C4-SOP-CHEM-003

Analyte	LOQ	Result	Result	Qualifier
	%	%	mg/g	
THCA	1.54	<LOQ	< LOQ	
d9-THC	1.54	86.3	863	
d8-THC	1.54	<LOQ	< LOQ	
CBDA	1.54	<LOQ	< LOQ	
CBD	1.54	<LOQ	< LOQ	
CBG	1.54	2.57	25.7	
CBN	1.54	<LOQ	< LOQ	
CBC	1.54	<LOQ	< LOQ	
Sum of Cannabinoids	1.54	88.9	889	Q3
Total THC	1.54	86.3	863	
Total CBD	1.54	<LOQ	< LOQ	
Total Cannabinoids	1.54	88.9	889	Q3

Total THC= THCA \* 0.877 + d9-THC. Total CBD= CBDA \* 0.877 + CBD.

**Vapen Brands**

4126 W Indian School Rd  
Phoenix, AZ 85019  
1602722293  
Lic#: 0000086DCKR00375578

Sample: S312055-01

CC ID#: 2312C4L0050.3930  
Lot#: N/A  
Batch#: 231226-001  
Batch Size: N/A

**FINAL**

Sample Name: MB Blueberry Kush Disposable

Strain Name: Blueberry Kush

Matrix: Concentrates\_Extracts

Amount Received: 17.6068 g

Sample Collected: 12/26/2023 10:00

Sample Received: 12/27/2023 12:30

Report Created: 01/03/2024 22:12

**Pesticides by LC/MS/MS - Compliance**

**Pass**

Date Analyzed: 12/28/2023 Analyst Initials: JCB SOP: C4-SOP-CHEM-006

Analyte	LOQ	Limit	Result	Qualifier	Status	Analyte	LOQ	Limit	Result	Qualifier	Status
	ppm	ppm	ppm				ppm	ppm	ppm		
Abamectin	0.120	0.5	<LOQ		Pass	Imazalil	0.100	0.2	<LOQ		Pass
Acephate	0.100	0.4	<LOQ		Pass	Imidacloprid	0.100	0.4	<LOQ		Pass
Acetamiprid	0.050	0.2	<LOQ		Pass	Kresoxim-methyl	0.100	0.4	<LOQ		Pass
Aldicarb	0.100	0.4	<LOQ		Pass	Malathion	0.050	0.2	<LOQ	I1	Pass
Azoxystrobin	0.050	0.2	<LOQ		Pass	Metalaxyl	0.100	0.2	<LOQ		Pass
Bifenazate	0.050	0.2	<LOQ		Pass	Methiocarb	0.050	0.2	<LOQ	L1, V1	Pass
Bifenthrin	0.050	0.2	<LOQ		Pass	Methomyl	0.100	0.4	<LOQ		Pass
Boscalid	0.100	0.4	<LOQ		Pass	Myclobutanil	0.050	0.2	<LOQ	I1, V1	Pass
Carbaryl	0.050	0.2	<LOQ	V1	Pass	Naled	0.125	0.5	<LOQ		Pass
Carbofuran	0.050	0.2	<LOQ		Pass	Oxamyl	0.250	1.0	<LOQ		Pass
Chlorantraniliprole	0.050	0.2	<LOQ	L1, V1	Pass	Paclobotrazol	0.100	0.4	<LOQ		Pass
Chlorfenapyr	0.500	1.0	<LOQ	V1	Pass	Permethrins	0.050	0.2	<LOQ		Pass
Chlorpyrifos	0.050	0.2	<LOQ		Pass	Phosmet	0.050	0.2	<LOQ		Pass
Clofentezine	0.050	0.2	<LOQ		Pass	Piperonyl butoxide	0.500	2.0	<LOQ		Pass
Cyfluthrin	0.500	1.0	<LOQ	V1	Pass	Prallethrin	0.100	0.2	<LOQ		Pass
Cypermethrin	0.250	1.0	<LOQ	V1	Pass	Propiconazole	0.100	0.4	<LOQ	V1	Pass
Daminozide	0.500	1.0	<LOQ		Pass	Propoxur	0.050	0.2	<LOQ		Pass
Diazinon	0.050	0.2	<LOQ		Pass	Pyrethrins	0.322	1.0	<LOQ	V1	Pass
Dichlorvos	0.050	0.1	<LOQ		Pass	Pyridaben	0.050	0.2	<LOQ		Pass
Dimethoate	0.050	0.2	<LOQ		Pass	Spinosad	0.050	0.2	<LOQ		Pass
Ethoprophos	0.050	0.2	<LOQ		Pass	Spiromesifen	0.050	0.2	<LOQ		Pass
Etofenprox	0.100	0.4	<LOQ		Pass	Spirotetramat	0.050	0.2	<LOQ		Pass
Etoxazole	0.050	0.2	<LOQ		Pass	Spiroxamine	0.100	0.4	<LOQ		Pass
Fenoxycarb	0.050	0.2	<LOQ		Pass	Tebuconazole	0.100	0.4	<LOQ	V1	Pass
Fenpyroximate	0.100	0.4	<LOQ		Pass	Thiacloprid	0.050	0.2	<LOQ		Pass
Fipronil	0.100	0.4	<LOQ	L1, V1	Pass	Thiamethoxam	0.050	0.2	<LOQ		Pass
Flonicamid	0.250	1.0	<LOQ		Pass	Trifloxystrobin	0.050	0.2	<LOQ		Pass
Fludioxonil	0.100	0.4	<LOQ		Pass						
Hexythiazox	0.250	1.0	<LOQ		Pass						

Vapen Brands  
4126 W Indian School Rd  
Phoenix, AZ 85019  
16027222293  
Lic#: 00000086DCKR00375578

Sample: S312055-01  
CC ID#: 2312C4L0050.3930  
Lot#: N/A  
Batch#: 231226-001  
Batch Size: N/A

**FINAL**

Sample Name: MB Blueberry Kush Disposable

Strain Name: Blueberry Kush

Matrix: Concentrates\_Extracts

Amount Received: 17.6068 g

Sample Collected: 12/26/2023 10:00

Sample Received: 12/27/2023 12:30

Report Created: 01/03/2024 22:12

**Metals by ICP-MS - Compliance**

**Pass**

Date Analyzed: 12/29/2023 Analyst Initials: RSS SOP: C4-SOP-CHEM-008

Analyte	LOQ	Limit	Result	Qualifier	Status
	ppm	ppm	ppm		
Arsenic	0.099	0.4	<LOQ		Pass
Cadmium	0.099	0.4	<LOQ		Pass
Lead	0.398	1.0	<LOQ		Pass
Mercury	0.040	0.2	<LOQ		Pass

**Mycotoxins by ELISA- Compliance**

**Pass**

Date Analyzed: 01/03/2024 Analyst Initials: DHV SOP: C4-SOP-MICRO-014

Analyte	LOQ	Limit	Result	Qualifier	Status
	ppb	ppb	ppb		
Aflatoxins Total	2.00	20	<LOQ		Pass
Ochratoxin A	4.00	20	<LOQ		Pass

Total Aflatoxins includes Aflatoxins B1, B2, G1, and G2.

Vapen Brands  
4126 W Indian School Rd  
Phoenix, AZ 85019  
16027222293  
Lic#: 00000086DCKR00375578

Sample: S312055-01  
CC ID#: 2312C4L0050.3930  
Lot#: N/A  
Batch#: 231226-001  
Batch Size: N/A

**FINAL**

Sample Name: MB Blueberry Kush Disposable

Strain Name: Blueberry Kush

Matrix: Concentrates\_Extracts

Amount Received: 17.6068 g

Sample Collected: 12/26/2023 10:00

Sample Received: 12/27/2023 12:30

Report Created: 01/03/2024 22:12

**Microbials**

**Pass**

**E. coli by 3M Petrifilm- Compliance**

Date Analyzed: 01/03/2024 Analyst Initials: DHV SOP: C4-SOP-MICRO-010

Analyte	LOQ	Limit	Result	Qualifier Status
	CFU/g	CFU/g	CFU/g	
<i>E. coli</i>	10	100	<10	Pass

**Aspergillus and Salmonella by qPCR - Compliance**

Date Analyzed: 01/03/2024 Analyst Initials: DHV SOP: C4-SOP-MICRO-013

Analyte	Result	Qualifier Status
	in one gram	
<i>Salmonella spp.</i>	Not Detected	Pass
<i>Aspergillus</i>	Not Detected	Pass

Aspergillus includes species flavus, fumigatus, niger, and terreus. Salmonella and Aspergillus by Medicinal Genomics.

**Vapen Brands**

4126 W Indian School Rd  
Phoenix, AZ 85019  
16027222293  
Lic#: 00000086DCKR00375578

Sample: S312055-01

CC ID#: 2312C4L0050.3930  
Lot#: N/A  
Batch#: 231226-001  
Batch Size: N/A

**FINAL**

Sample Name: MB Blueberry Kush Disposable

Strain Name: Blueberry Kush

Matrix: Concentrates\_Extracts

Amount Received: 17.6068 g

Sample Collected: 12/26/2023 10:00

Sample Received: 12/27/2023 12:30

Report Created: 01/03/2024 22:12

**Residual Solvents by Headspace GC/MS - Compliance**

**Pass**

Date Analyzed: 01/02/2024 Analyst Initials: JCB SOP: C4-SOP-CHEM-005

Analyte	LOQ	Limit	Result	Qualifier	Status	Analyte	LOQ	Limit	Result	Qualifier	Status
	ppm	ppm	ppm				ppm	ppm	ppm		
Acetone	123	1000	<LOQ		Pass	2,2-Dimethylbutane	39.4		<LOQ		
Acetonitrile	49.3	410	<LOQ		Pass	2-methylpentane/2,	78.8		<LOQ		
Benzene	0.985	2	<LOQ		Pass	3-dimethylbutane					
Butanes	616	5000	<LOQ	L1	Pass	2-Propanol (IPA)	616	5000	<LOQ		Pass
n-Butane	616		<LOQ	L1		Isopropyl acetate	616	5000	<LOQ		Pass
iso-Butane	616		<LOQ	L1		Methanol	369	3000	<LOQ		Pass
Chloroform	14.8	60	<LOQ		Pass	Pentanes	616	5000	<LOQ	L1	Pass
Dichloromethane	73.9	600	<LOQ		Pass	n-Pentane	616		<LOQ	L1, V1	
Ethanol	616	5000	<LOQ		Pass	iso-pentane	616		<LOQ	L1	
Ethyl acetate	616	5000	<LOQ		Pass	neo-Pentane	616		<LOQ	L1	
Diethyl Ether	616	5000	<LOQ		Pass	Toluene	113	890	<LOQ		Pass
n-Heptane	616	5000	<LOQ	V1	Pass	Xylenes	271	2170	<LOQ		Pass
Hexanes	39.4	290	<LOQ		Pass	m/p-Xylene	542		<LOQ		
n-Hexane	39.4		<LOQ			o-Xylene	271		<LOQ		
3-Methylpentane	39.4		<LOQ			Ethyl benzene	271		<LOQ		



Vapen Brands  
4126 W Indian School Rd  
Phoenix, AZ 85019  
16027222293  
Lic#: 00000086DCKR00375578

Sample: S312055-01  
CC ID#: 2312C4L0050.3930  
Lot#: N/A  
Batch#: 231226-001  
Batch Size: N/A

**FINAL**

Sample Name: MB Blueberry Kush Disposable

Strain Name: Blueberry Kush

Matrix: Concentrates\_Extracts

Amount Received: 17.6068 g

Sample Collected: 12/26/2023 10:00

Sample Received: 12/27/2023 12:30

Report Created: 01/03/2024 22:12

### Notes and Definitions

Item	Definition
I1	Interference. Relative intensity of a characteristic ion in the sample analyte exceeded 30% of the relative intensity in the reference spectrum.
L1	The percent recovery of the LCS was above the control limit for the test but analyte was not detected above the Action Limit in Table 3.1.
Q3	Testing result is for informational purposes only and cannot be used to satisfy dispensary testing requirements in R9-17-317.01(A) or labeling requirements in R9-17-317. Testing result is not accredited under ISO 17025.
V1	CCV recovery exceeded control limits but the sample analyte concentration was below maximum allowable concentrations in table 3.1
< LOQ	Results below the Limit of Quantification.
Limit	Maximum allowable concentration as defined by Table 3.1 in Arizona Administrative code (A.A.C.) Title 9, Chapter 17
CFU/g	Colony forming units per gram
ppm	Parts per million
ppb	Parts per billion
NT	Not Tested
Sum of Cannabinoids = THCA + d9-THC + CBDA + CBD + d8-THC + CBG + CBN + CBC	
Total Cannabinoids = Total THC + Total CBD + d8-THC + CBG + CBN + CBC	



Jillian Blaney  
Technical Laboratory Director