

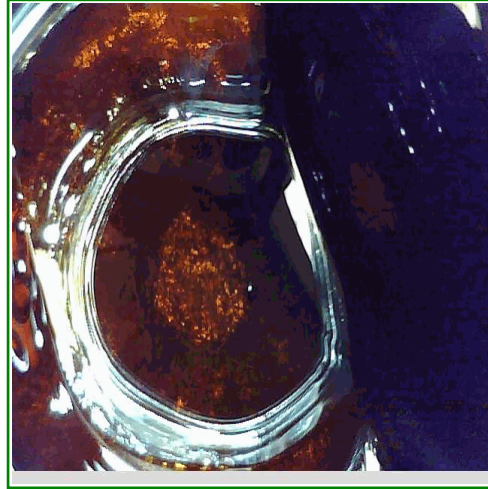
Catalina Hills / Venom
2046 W Ironwood Dr
Phoenix, AZ 85021
19289654611
Lic#: 00000016DCCC00020807

Sample: S306053-01
CC ID#: 2306C4L0055.1924
Lot#: N/A
Batch#: 1768
Batch Size: N/A

FINAL

Sample Name: RSO Grape Valley Kush
Strain Name: RSO Grape Valley Kush
Matrix: Concentrates Extracts

Sample Received: 06/21/2023
Report Created: 06/27/2023



Potency Results

75.7%	<LOQ%	RATIO	
Total THC	Total CBD	1	0
		THC	CBD

Total THC= THCa * 0.877 + d9-THC
Total CBD= CBDa * 0.877 + CBD

SAFETY

Microbials	Residual Solvents	Mycotoxins	Pesticides	Metals
PASS	PASS	PASS	PASS	PASS



Jillian Blaney
Technical Laboratory Director

Catalina Hills / Venom

2046 W Ironwood Dr
Phoenix, AZ 85021
19289654611

Lic#: 00000016DCCC00020807

Sample: S306053-01

CC ID#: 2306C4L0055.1924

Lot#: N/A

Batch#: 1768

Batch Size: N/A

FINAL

Sample Name: RSO Grape Valley Kush

Strain Name: RSO Grape Valley Kush

Matrix: Concentrates Extracts

Sample Received: 06/21/2023

Report Created: 06/27/2023

Cannabinoids by HPLC - Medical

Date Analyzed: 06/23/2023 Analyst Initials: NSS

Analyte	LOQ	Mass	Mass	Q
	%	%	mg/g	
THCA	1.53	<LOQ	<LOQ	
d9-THC	1.53	75.7	757.00	
d8-THC	1.53	<LOQ	<LOQ	
CBDa	1.53	<LOQ	<LOQ	
CBD	1.53	<LOQ	<LOQ	M1
CBG	1.53	1.89	18.90	
CBN	1.53	<LOQ	<LOQ	
CBC	1.53	<LOQ	<LOQ	
Total Cannabinoids	1.53	77.6	776.00	Q3
Total THC	1.53	75.7	757.00	
Total CBD	1.53	<LOQ	<LOQ	

Total THC= THCa * 0.877 + d9-THC. Total CBD= CBDa * 0.877 + CBD.

LOQ = Limit of Quantitation; NR = Not Reported; ND = Not Detected.

Unless otherwise stated all quality control samples performed within specifications established by the Laboratory.

Cannabinoids method: HPLC-DAD.

Catalina Hills / Venom

2046 W Ironwood Dr
Phoenix, AZ 85021
19289654611

Lic#: 00000016DCCC00020807

Sample: S306053-01

CC ID#: 2306C4L0055.1924

Lot#: N/A

Batch#: 1768

Batch Size: N/A

FINAL

Sample Name: RSO Grape Valley Kush

Strain Name: RSO Grape Valley Kush

Matrix: Concentrates Extracts

Sample Received: 06/21/2023

Report Created: 06/27/2023

Pesticides by LCMSMS - Medical

Pass

Date Analyzed: 06/23/2023 Analyst Initials: JCB

Analyte	LOQ	Limit	Units	Q	Status	Analyte	LOQ	Limit	Units	Q	Status
	ppm	ppm	ppm				ppm	ppm	ppm		
Abamectin	0.120	0.5	<LOQ	M2	Pass	Hexythiazox	0.251	1.0	<LOQ	M2	Pass
Acephate	0.100	0.4	<LOQ		Pass	Imazalil	0.100	0.2	<LOQ		Pass
Acetaminocyl	0.502	2.0	<LOQ	M2	Pass	Imidacloprid	0.100	0.4	<LOQ		Pass
Acetamiprid	0.050	0.2	<LOQ		Pass	Kresoxim-methyl	0.100	0.4	<LOQ		Pass
Aldicarb	0.100	0.4	<LOQ		Pass	Malathion	0.050	0.2	<LOQ		Pass
Azoxystrobin	0.050	0.2	<LOQ		Pass	Malaxyl	0.100	0.2	<LOQ		Pass
Bifenazate	0.050	0.2	<LOQ	M1	Pass	Methiocarb	0.050	0.2	<LOQ		Pass
Bifenthrin	0.050	0.2	<LOQ	M2	Pass	Methomyl	0.100	0.4	<LOQ		Pass
Boscalid	0.100	0.4	<LOQ		Pass	Myclobutanil	0.050	0.2	<LOQ		Pass
Carbaryl	0.050	0.2	<LOQ		Pass	Naled	0.125	0.5	<LOQ		Pass
Carbofuran	0.050	0.2	<LOQ		Pass	Oxamyl	0.251	1.0	<LOQ		Pass
Chlorantraniliprole	0.050	0.2	<LOQ		Pass	Paclobutrazol	0.100	0.4	<LOQ		Pass
Chlorfenapyr	0.502	1.0	<LOQ	M2	Pass	Permethrins	0.050	0.2	<LOQ	M2	Pass
Chlorpyrifos	0.050	0.2	<LOQ		Pass	Phosmet	0.050	0.2	<LOQ		Pass
Clofentezine	0.050	0.2	<LOQ	M2	Pass	Piperonyl butoxide	0.502	2.0	<LOQ		Pass
Cyfluthrin	0.502	1.0	<LOQ	M2	Pass	Prallethrin	0.100	0.2	<LOQ		Pass
Cypermethrin	0.251	1.0	<LOQ	M2	Pass	Propiconazole	0.100	0.4	<LOQ		Pass
Daminozide	0.502	1.0	<LOQ		Pass	Propoxur	0.050	0.2	<LOQ		Pass
Diazinon	0.050	0.2	<LOQ	M2	Pass	Pyrethrins	0.323	1.0	<LOQ	M2	Pass
Dichlorvos	0.050	0.1	<LOQ		Pass	Pyridaben	0.050	0.2	<LOQ		Pass
Dimethoate	0.050	0.2	<LOQ		Pass	Spinosad	0.050	0.2	<LOQ		Pass
Ethoprophos	0.050	0.2	<LOQ		Pass	Spiromesifen	0.050	0.2	<LOQ		Pass
Etofenprox	0.100	0.4	<LOQ	M2	Pass	Spirotetramat	0.050	0.2	<LOQ		Pass
Etoxazole	0.050	0.2	<LOQ		Pass	Spiroxamine	0.100	0.4	<LOQ		Pass
Fenoxycarb	0.050	0.2	<LOQ		Pass	Tebuconazole	0.100	0.4	<LOQ		Pass
Fenpyroximate	0.100	0.4	<LOQ		Pass	Thiacloprid	0.050	0.2	<LOQ		Pass
Fipronil	0.100	0.4	<LOQ		Pass	Thiamethoxam	0.050	0.2	<LOQ		Pass
Flonicamid	0.251	1.0	<LOQ		Pass	Trifloxystrobin	0.050	0.2	<LOQ		Pass
Fludioxonil	0.100	0.4	<LOQ		Pass						

LOQ = Limit of Quantitation; NR = Not Reported; ND = Not Detected. Unless otherwise stated all quality control samples performed within specifications established by the Laboratory. Pesticides method: LC/MS/MS.

Catalina Hills / Venom

2046 W Ironwood Dr
Phoenix, AZ 85021
19289654611

Lic#: 00000016DCCC00020807

Sample: S306053-01

CC ID#: 2306C4L0055.1924

Lot#: N/A

Batch#: 1768

Batch Size: N/A

FINAL

Sample Name: RSO Grape Valley Kush

Strain Name: RSO Grape Valley Kush

Matrix: Concentrates Extracts

Sample Received: 06/21/2023

Report Created: 06/27/2023

Metals by ICPMS - Medical

Pass

Date Analyzed: 06/27/2023 Analyst Initials: LSL

Analyte	LOQ	Limit	Mass	Q	Status
	ppm	ppm	ppm		
Arsenic	0.099	0.405	<LOQ		Pass
Cadmium	0.099	0.405	<LOQ		Pass
Lead	0.396	1.05	<LOQ		Pass
Mercury	0.396	1.25	<LOQ		Pass

LOQ = Limit of Quantitation; ND = Not Detected. Unless otherwise stated all quality control samples performed within specifications established by the Laboratory.

Mycotoxins by ELISA- Medical

Pass

Date Analyzed: 06/22/2023 Analyst Initials: KAM

Analyte	LOQ	Limit	Mass	Q	Status
	ppb	ppb	ppb		
Aflatoxins Total	2.00	20	<LOQ		Pass
Ochratoxin A	4.00	20	<LOQ		Pass

LOQ = Limit of Quantitation; NR = Not Reported; ND = Not Detected. Unless otherwise stated all quality control samples performed within specifications established by the Laboratory. Total Aflatoxins includes Aflatoxins B1, B2, G1, and G2.

Catalina Hills / Venom

2046 W Ironwood Dr
Phoenix, AZ 85021
19289654611

Lic#: 00000016DCCC00020807

Sample: S306053-01

CC ID#: 2306C4L0055.1924

Lot#: N/A

Batch#: 1768

Batch Size: N/A

FINAL

Sample Name: RSO Grape Valley Kush

Strain Name: RSO Grape Valley Kush

Matrix: Concentrates Extracts

Sample Received: 06/21/2023

Report Created: 06/27/2023

Microbials

Pass

E. coli by 3M Petrifilm- Medical

Plate

Date Analyzed: 06/27/2023 Analyst Initials: KAM

Analyte	LOQ	Limit	Mass	Q	Status
	cfu/g	cfu/g	cfu/g		
E. coli	10	100	<LOQ		Pass

Notes: Aerobic plate counts and yeast and mold are provided for informational purposes only.
LOQ = Limit of Quantitation; TNTC = Too Numerous to Count; NR = Not Reported; NT = Not Tested;
ND = Not Detected; Unless otherwise stated all quality control samples performed within specifications established by the Laboratory. Aspergillus includes species flavus, fumigatus, niger, and terreus.
E. coli by Petrifilm, Salmonella and Aspergillus by Medicinal Genomics.

Aspergillus and Salmonella by qPCR - Medical
qPCR

Date Analyzed: 06/27/2023 Analyst Initials: KAM

Analyte	Mass	Q	Status
Salmonella spp.	Not Detected		Pass
Aspergillus	Not Detected		Pass

Notes: Aerobic plate counts and yeast and mold are provided for informational purposes only.
LOQ = Limit of Quantitation; TNTC = Too Numerous to Count; NR = Not Reported; NT = Not Tested;
ND = Not Detected; Unless otherwise stated all quality control samples performed within specifications established by the Laboratory. Aspergillus includes species flavus, fumigatus, niger, and terreus.
E. coli by Petrifilm, Salmonella and Aspergillus by Medicinal Genomics.

Catalina Hills / Venom

2046 W Ironwood Dr
Phoenix, AZ 85021
19289654611

Lic#: 00000016DCCC00020807

Sample: S306053-01

CC ID#: 2306C4L0055.1924

Lot#: N/A

Batch#: 1768

Batch Size: N/A

FINAL

Sample Name: RSO Grape Valley Kush

Strain Name: RSO Grape Valley Kush

Matrix: Concentrates Extracts

Sample Received: 06/21/2023

Report Created: 06/27/2023

Residual Solvents by Headspace GCMS - Medical

Pass

Date Analyzed: 06/21/2023 Analyst Initials: SML

Analyte	LOQ	Limit	Units	Q	Status	Analyte	LOQ	Limit	Units	Q	Status
	ppm	ppm	ppm				ppm	ppm	ppm		
Acetone	132	1000	<LOQ		Pass	2-methylpentane/2,	84.2		<LOQ		
Acetonitrile	52.6	410	<LOQ		Pass	3-dimethylbutane					
Benzene	1.05	2	<LOQ		Pass	2-Propanol (IPA)	658	5000	<LOQ		Pass
Butanes	658	5000	<LOQ		Pass	Isopropyl acetate	658	5000	<LOQ		Pass
n-Butane	658		<LOQ	M1		Methanol	395	3000	<LOQ		Pass
iso-Butane	658		<LOQ	M1, V1		Pentanes	658	5000	<LOQ		Pass
Chloroform	15.8	60	<LOQ		Pass	n-Pentane	658		<LOQ		
Dichloromethane	78.9	600	<LOQ		Pass	iso-pentane	658		<LOQ		
Ethanol	658	5000	703		Pass	neo-Pentane	658		<LOQ		
Ethyl acetate	658	5000	<LOQ		Pass	Propane	658	5000	<LOQ		Pass
Diethyl Ether	658	5000	<LOQ		Pass	Toluene	121	890	<LOQ		Pass
n-Heptane	658	5000	<LOQ		Pass	Xylenes	289	2170	<LOQ		Pass
Hexanes	42.1	290	<LOQ		Pass	m/p-Xylene	579		<LOQ		
n-Hexane	42.1		<LOQ			o-Xylene	289		<LOQ		
3-Methylpentane	42.1		<LOQ			Ethyl benzene	289		<LOQ		
2,2-Dimethylbutane	42.1		<LOQ								

LOQ = Limit of Quantitation; ND = Not Detected;
Unless otherwise stated all quality control samples performed
within specifications established by the Laboratory.
Solvents method: GC/MS

Catalina Hills / Venom

2046 W Ironwood Dr
Phoenix, AZ 85021
19289654611

Lic#: 00000016DCCC00020807

Sample: S306053-01

CC ID#: 2306C4L0055.1924

Lot#: N/A

Batch#: 1768

Batch Size: N/A

FINAL

Sample Name: RSO Grape Valley Kush

Strain Name: RSO Grape Valley Kush

Matrix: Concentrates Extracts

Sample Received: 06/21/2023

Report Created: 06/27/2023

Notes and Definitions

Item	Definition
M1	Matrix Spike recovery was higher than control limit but recovery of the LCS was within control limits.
M2	Matrix Spike recovery was lower than control limit but recovery of the LCS was within control limits.
Q3	Testing result is for informational purposes only and cannot be used to satisfy dispensary testing requirements in R9-17-317.01(A) or labeling requirements in R9-17-317. Testing result is not accredited under ISO 17025.
V1	CCV recovery exceeded control limits but the sample analyte concentration was below maximum allowable concentrations in table 3.1
ND	Analyte NOT DETECTED at or above the reporting limit.
RPD	Relative Percent Difference
%REC	Percent Recovery
Source	Sample that was matrix spiked or duplicated.